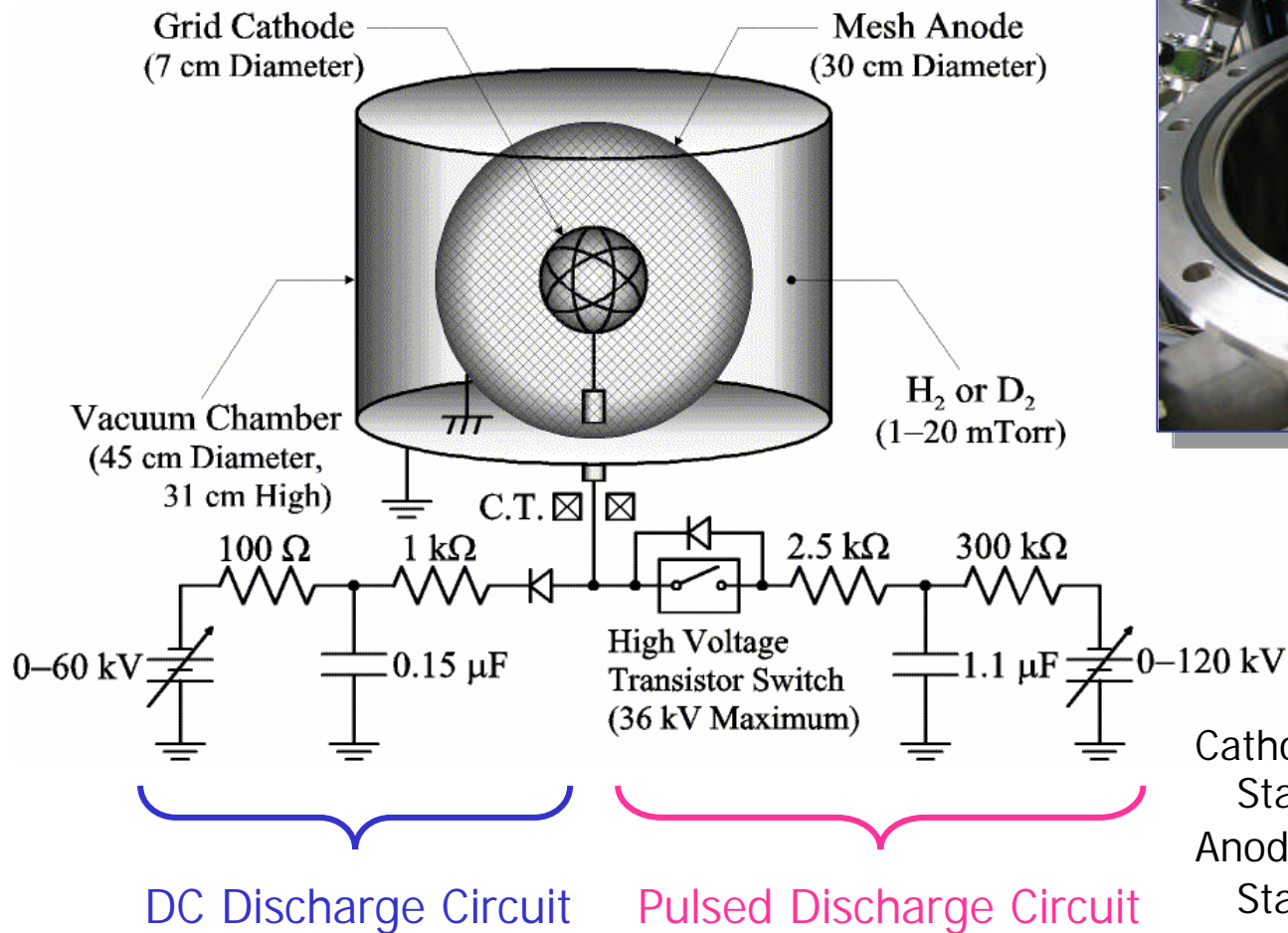


# Pulsed IEC System

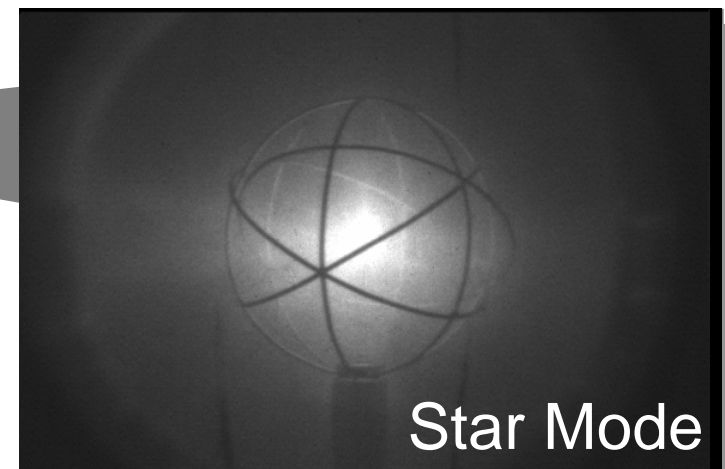
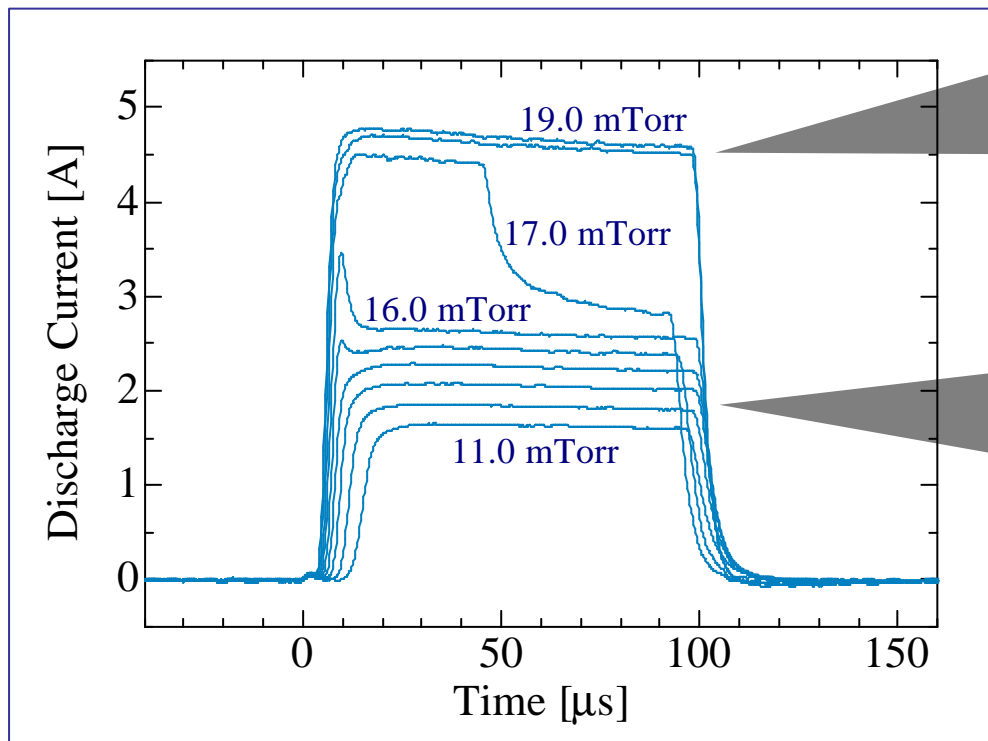


Cathode:  
Stainless Wire ( $\phi 1.2$  mm)

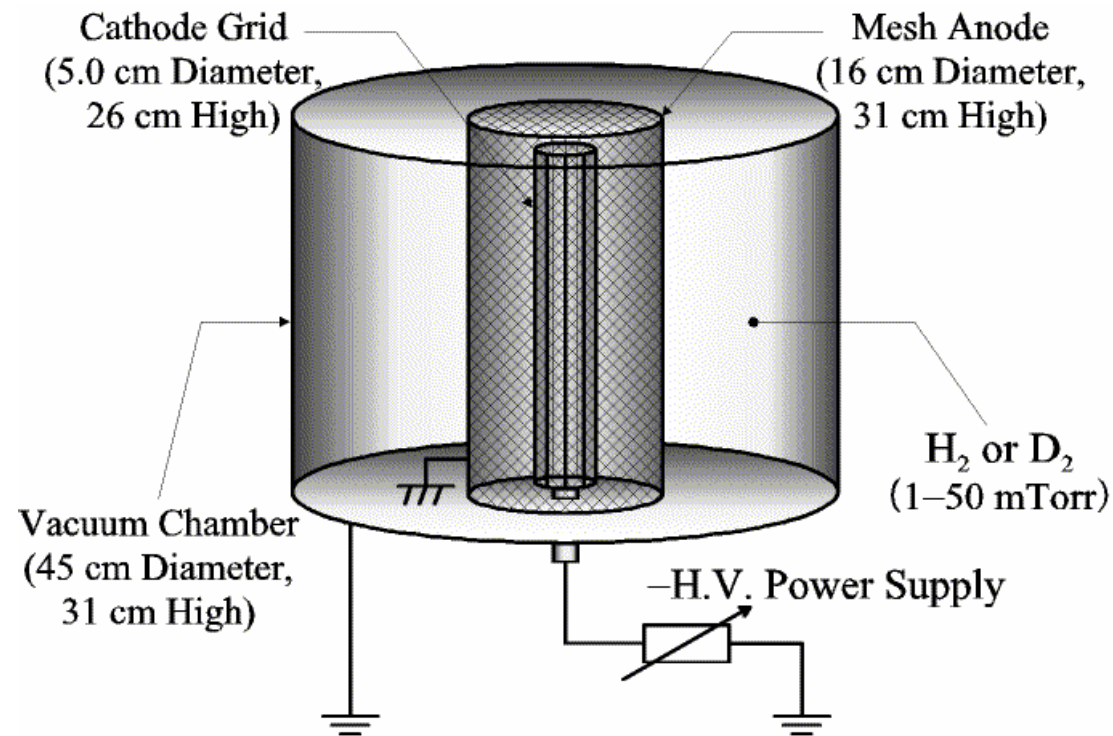
Anode:  
Stainless Mesh (0.5 mm-pitch)

# Photograph of Pulsed Discharge Plasma

Gas : H<sub>2</sub>  
Pressure : 11.0–19.0 mTorr  
Charging Voltage : -20 kV



# Cylindrical IEC System



Cathode: Stainless Rods ( $\phi$ 2.0 mm) x8  
Anode: Stainless Mesh (0.5 mm-pitch)

